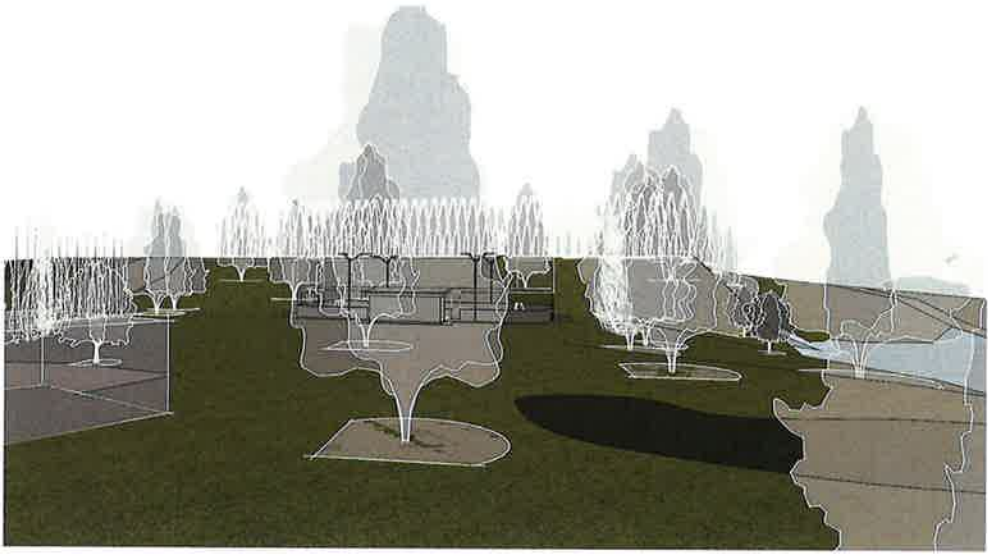
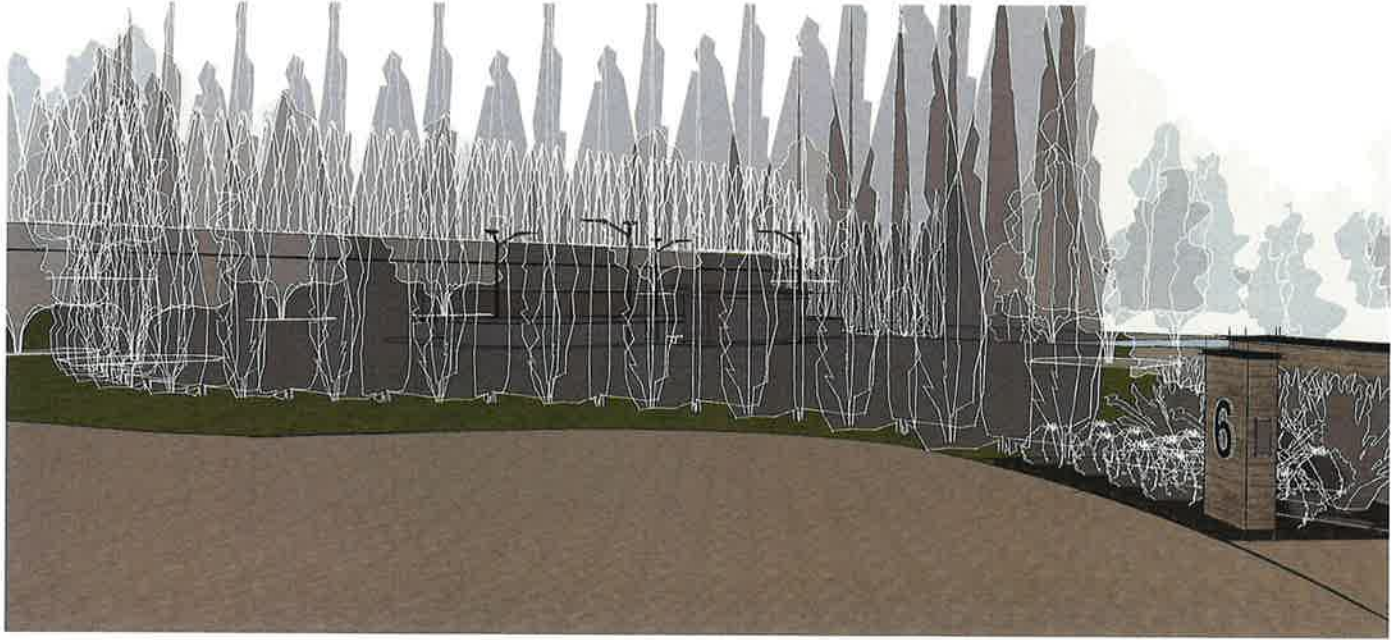
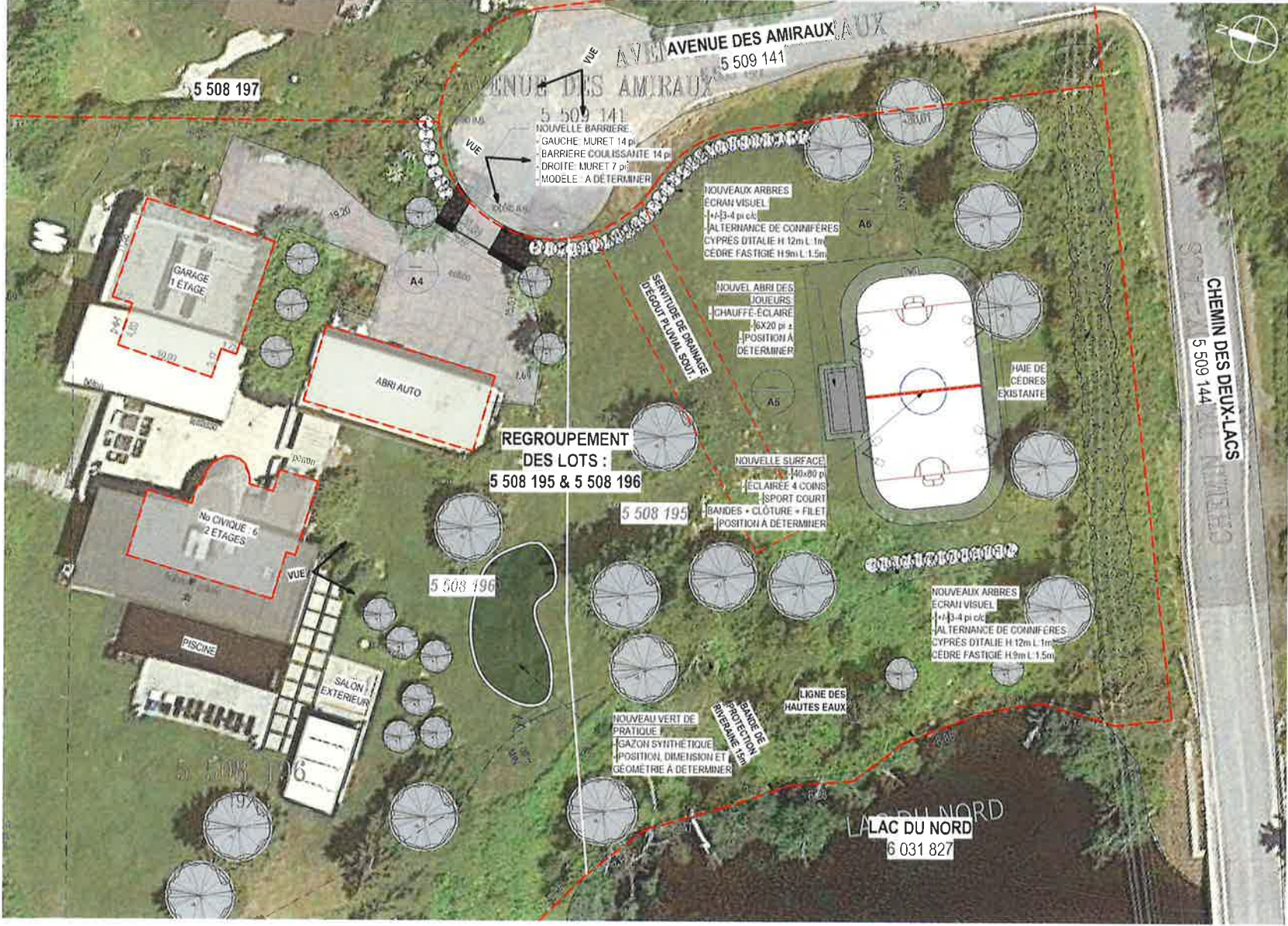


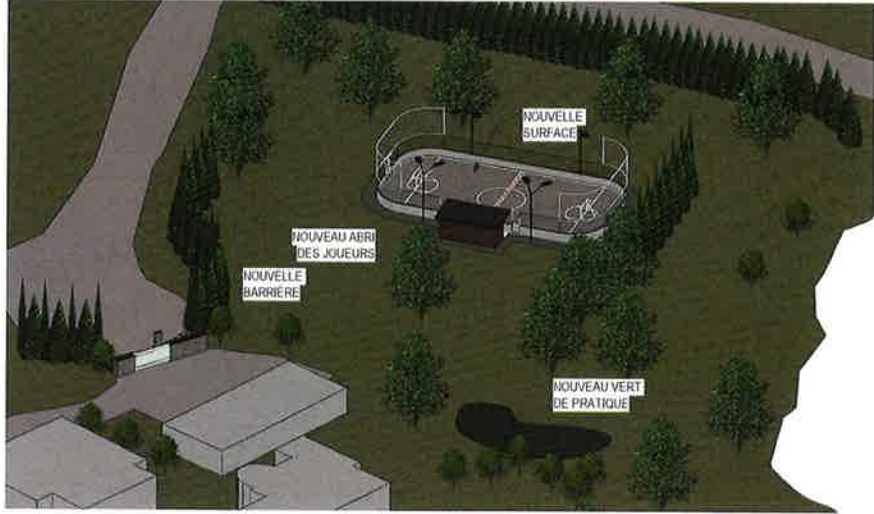
SURFACE
S200402
A6

Chalet - Aménagement extérieur
6, avenue des Amiraux, Estérel
Paul Roy
2020-06-17 DOCUMENT POUR CCU (RÉVISION 2)

ENTREPRENEUR GÉNÉRAL
STRUXAR
gestion | conception | construction







LED COURTBLADE (XARL)



DDE LIGHTING FACTS

Department of Energy has verified representative product test data and results in accordance with its Lighting Facts Program. Visit www.lightingfacts.com for specific catalog strings.

LIGHT OUTPUT - XARL

Color	Type	Lumens (Nominal)	Watts (Nominal)
Cool White	HO	58977*	52.6
Neutral White	HO	56960*	52.6

LED Chips are frequently updated therefore values may increase

- 1- Verified by IFL Report
- 2- 66624 (Available upon request)
- 3- Verified by IFL Report
- 4- 66525 (Available upon request)

CHOIX DU MODÈLE À VALIDER AVEC LE CLIENT ET FOURNISSEUR.

US Patent 0726,947 7,828,456 8,002,428 8,177,396 8,434,893 8,567,983 and US & Int'l patents pending

SMARTTEC™ - LSI drivers feature integral sensor which reduces drive current, when ambient temperatures exceed rated temperature.

ENERGY SAVING CONTROL OPTION - DIM - 0-10 volt dimming enabled with controls by others.

EXPECTED LIFE - Minimum 60,000 hours to 100,000 hours depending upon the ambient temperature of the installation location. See LSI web site for specific guidance.

LEDS - Select high-brightness LEDs in Cool White (5000K), or Neutral White (4000K) color temperature, 70 CRI.

DISTRIBUTION/PERFORMANCE - High performance, multi-faceted, reflector provides uniform Forward Throw (FT) distribution with sharp backlight cutoff. Photometric data is listed in accordance with IESNA guidelines.

HOUSING - One-piece, die-formed aluminum housing contains factory pre-wired driver in a gasketed, weather-resistant wiring compartment. Hinged wiring access door (with safety lanyard) located underneath. Fixture is IP65 rated.

OPTICAL UNIT - Clear tempered optical-grade flat glass lens permanently sealed to weather-tight aluminum optic frame (includes pressure-stabilizing breather).

MOUNTING - The fixture is furnished with installed stainless steel, threaded mounting studs protruding from the rear of the housing. Stainless steel nuts and washers used to secure the fixture to the bracket are also included.

ELECTRICAL - Two-stage surge protection (including separate surge protection built into electronic driver) meets IEEE C62.41.2-2002, Location Category C. Available with universal voltage power supply 120-277VAC (50/60Hz input) and 347-480 VAC.

DRIVER - Available in HO (High Output) drive current. Components are fully encased in potting material for moisture resistance. Driver complies with FCC standards. Driver and key electronic components can be easily accessed.

OPERATING TEMPERATURE - -40°C to +50°C (-40°F to +122°F)

FINISH - Fixtures are finished with LSI's DuraGrip® polyester powder coat finishing process. The DuraGrip finish withstands extreme weather changes without cracking or peeling.

WARRANTY - LSI LED fixtures carry a limited 5-year warranty.

PHOTOMETRICS - Please visit our web site at www.lsi-industries.com for detailed photometric data.

SHIPPING WEIGHT (in carton) - 55 lbs./24.9kg

LISTING - UL listed to US and international safety standards. Suitable for wet locations.

This product, or selected versions of this product, meet the standards listed below. Please consult factory for your specific requirements.



Fixtures comply with ANSI C136.31 2010 American National Standard for Roadway Lighting Equipment - Luminance Variation 1.5G requirements.

LED COURTBLADE (XARL)

LUMINAIRE ORDERING INFORMATION

TYPICAL ORDER EXAMPLE **XARL FT LED HO CW UE WHT**

Prefix	Distribution	Light Source	Drive Current	Color Temperature	Input Voltage	Finish	Options
XARL FT	Forward Throw	LED	HO High Output	CW - Cool White 2500K NW - Neutral White (4000K)	UE - Universal Voltage 120-277V 347-480 Universal Voltage (347-480V)	BLK - Black BRZ - Bronze GPT - Graphite MSV - Metallic Silver	PLP - Platinum Plus GRN - Green WHT - White DIM - 0-10V Dimming (from External Signal)

LUMINAIRE EPA CHART - XARL (Fixture & bracket)

Beam Angle	Beam Diameter	Beam Length
Single	1.7'	
D180°	2.4'	
D70°	1.8'	
D80°	4.3'	

Note: House Side Shields adds to Fixture EPA. Consult factory.

ACCESSORY ORDERING INFORMATION (Accessories are field installed)

Accessory	Order Number
Pre-wire Kit	610098BLK
XLCL FT HSS PM - External House Side Shield (Back only - rear mounting)	610098BLK
FK176 - Single Fusing (177V)	FK176
FK277 - Single Fusing (277V)	FK277
DF4208-240 - Double Fusing (208V-240V)	DF4208-240
DF4485 Double Fusing - 480V	DF4485
FK347 - Single Fusing (347V)	FK347

ELECTRICAL REQUIREMENTS

Voltage	Current
120V	4.0 amp
208V	2.0 amp
240V	2.3 amp
277V	2.0 amp
347V	1.6 amp
480V	1.2 amp

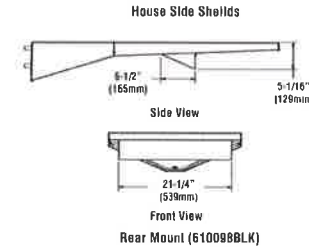
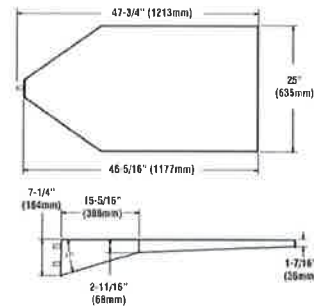
BRACKET ORDERING INFORMATION

Bracket Designation	Bracket Type	Bracket Configuration	Length	Bracket Finish
BRK1 - Extension	HO Ext. On	S - Single	38"	BLK - Black
BRK2 - Pole Top Hub ^{1,2}	RES1 - External Spigot	S - Single D183 - Double D170 - Double D300 - Double D300 - Quad D170 - Quad		BRZ - Bronze GPT - Graphite MSV - Metallic Silver PLP - Platinum Plus GRN - Green WHT - White

FOOTNOTES:

- 1- House Side Shields add to fixture EPA. Consult factory.
- 2- Fusing must be located in hand pole of pole.
- 3 - One extension bracket is required per fixture.
- 4 - Pole top hub will fit over 4" OD pole or 5" OD pole with 4" flange.
- 5 - Cap is included with pole top hub.

DIMENSIONS



BUG CHARTS

XARL - TYPE FT

Drive Current	Color Temp. °K	Lumens	Watts	LER	BUG Rating
HO	CW	58,977	52.6	112	B5-U0-G4
	NW	56,960	52.6	108	B5-U0-G5

* Color Temperature: NW-4000K, CW-5000K

Project Name _____ Fixture Type _____ 07/26/16
 Catalog # _____ © 2015 LSI INDUSTRIES INC.

Project Name _____ Fixture Type _____ 07/26/16
 Catalog # _____ © 2015 LSI INDUSTRIES INC.

ÉCLAIRAGE SURFACE

Chalet - Aménagement extérieur

6, avenue des Amiraux, Estérel
Paul Roy

ENTREPRENEUR GÉNÉRAL
STRUXAR
gestion | conception | construction

S200402

A7

2020-06-17 DOCUMENT POUR CCU (RÉVISION 2)



CourtBlade
(XARL)
LED Sports
Lighting

High Performance Sports Lighting Experience, Service and Innovation

With more than 35 years experience, focused exclusively on sports lighting, LSI Industries is recognized as one of the most experienced, respected and customer driven sports lighting suppliers in the industry.

As a result of highly personalized service, we can offer a complete line of innovative, high-performance, energy-efficient lighting solutions for indoor/outdoor tennis courts and other selected specialty sports applications. LSI Industries delivers the best lighting consultation expertise. We offer the right lighting solution for your sports venue to satisfy the player, spectator, community and environmental requirements.


LSI CourtBlade (XARL) LED Sports Lighting features

LSI's CourtBlade LED sports light is a game changer for court lighting applications. The low profile CourtBlade utilizes high performance LEDs and precise optics to produce superior levels of illumination and uniformity. Compared with typical HID court lighting systems, the energy load is reduced by 50%.

- High Performance Full Cutoff LED
- Aerodynamic Low-Profile Shape
- 50% Energy Reduction vs. 1000W Metal Halide
- 60,000 - 100,000 Hr. Expected Life
- Direct Retrofit Mounting of LSI Courtsider® and Aerosystem® fixtures
- Matching Pole S Brackets Available
- Lightweight for Easy Installation (55 lbs)
- Consistent lumens output over fixture life
- Instant On and Dimmable
- Optional wireless control available
- 5-Year Warranty
- Surge protector built-in
- Photometric Test rig (3rd Party Tested)
- Glass lens over LED nodes vs Acrylic



Micro-Louver Optical System



The CourtBlade fixture's innovative Micro-Louver optical system provides a controlled forward throw distribution with sharp backside cutoff.

The 3D product illustration (above) shows an enlarged section of 16 of the 266 total mid-power LED chips of the optical system. The system also contains a secondary highly specular anodized aluminum reflector for each LED, and a clear flat glass lens. The reflector projects light forward and laterally to illuminate the court surface and the vertical ball travel area above the court.

The reflector design also reduces direct glare from the fixture at normal viewing angles. The photometric performance is verified by a third party, independent testing laboratory (ITL Boulder).



PHOTO DE L'ÉCLAIRAGE DURANT LE JOUR PHOTO DE L'ÉCLAIRAGE DURANT LA NUIT

ÉCLAIRAGE SURFACE

S200402

A8

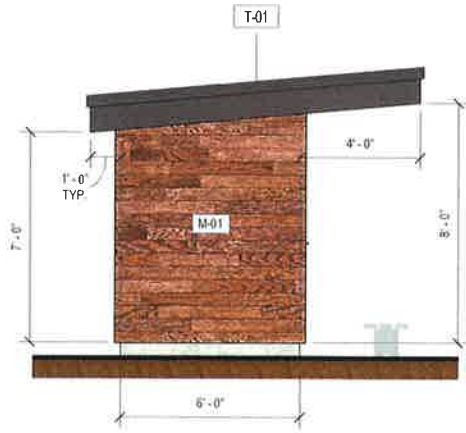
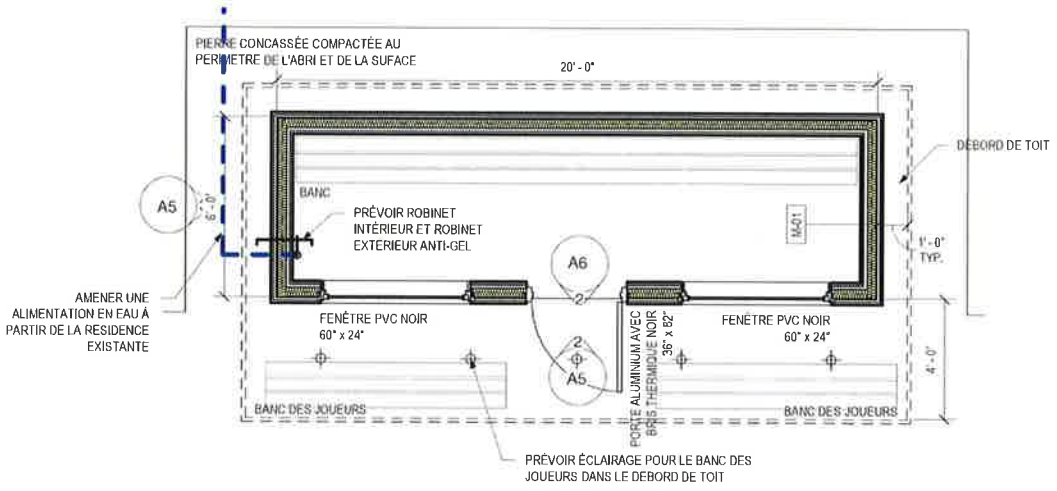
Chalet - Aménagement
extérieur

6, avenue des Amiraux, Estérel

Paul Roy

2020-06-17 DOCUMENT POUR CCU (REVISION 2)

ENTREPRENEUR GÉNÉRAL
STRUXAR
gestion | conception | construction



MUR EXTERIEUR

- M-01**
- REVÊTEMENT BOIS DE MAIBEC PROFILÉ CONTEMPORAIN 6" (TEINTE NATURELLE - BRUN BAIE DE FUNDY 061 OU ÉQUIVALENT AU REVÊTEMENT EN BOIS DE LA RÉSIDENCE PRINCIPALE EXISTANTE)
 - FOURRURES 1"X4" @ 16" c/c, VERT
 - PANNEAUX COMFORT BOARD 1" (R-4)
 - COLOMBAGES 2"X4" @ 16" c/c (EPS Na1/No2)
 - PANNEAUX DE LAINE DE FIBRE DE ROCHE 3-12" (R-14)
 - RETARDATEUR DE VAPEUR INTELLIGENT SCELLÉ
 - FOURRURES 1"X4" @ 16" c/c, HOR
 - REVÊTEMENT INTÉRIEUR (VOIR CLIENT)

TOITURE

- T-01**
- TOITURE MÉTALLIQUE; MODÈLE PRESTIGE 16" DE VICWEST, COULEUR 56068 NOIR
 - MEMBRANE D'IMPERMÉABILISATION AUTOCOLLANTE AUTO CICATRISANTE
 - PANNEAU DE SUPPORT EN CONTREPLAQUE 5/8"
 - FOURRURES DE BOIS TRAITÉE 3"x2", POSÉES PERPENDICULAIREMENT AU SENS DE LA PENTE @ 24" c/c
 - FOURRURES DE BOIS TRAITÉE 3"x2", POSÉES DANS LE SENS DE LA PENTE @ 24" c/c
 - MEMBRANE D'IMPERMÉABILISATION PAPIER NOIR 15lbs
 - PANNEAU DE SUPPORT EN CONTREPLAQUE 5/8"
 - SOLIVES EN BOIS 2"x10" @ 12" c/c
 - ISOLANT FIBRE DE VERRE MIN (R-30)

ABRI DES JOUEURS

Chalet - Aménagement extérieur

6, avenue des Amiraux, Estérel
Paul Roy

S200402

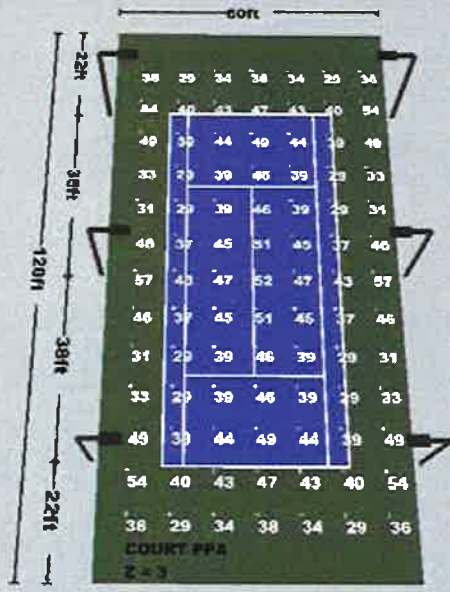
A5

2020-06-17 DOCUMENT POUR CCU (RÉVISION 2)

ENTREPRENEUR GÉNÉRAL
STRUXAR
gestion | conception | construction

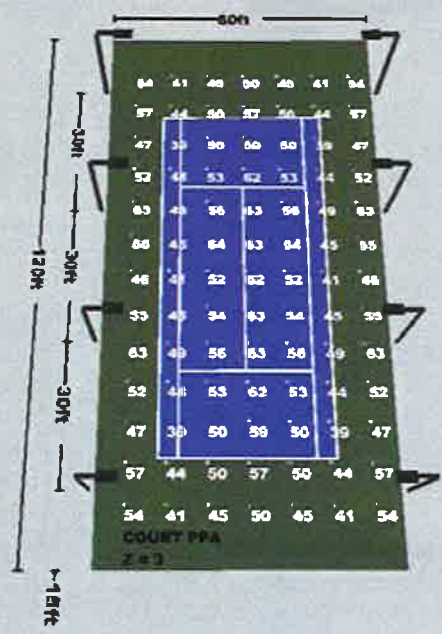
Standard Layouts

6 Fixtures Per Court (60' x 120')



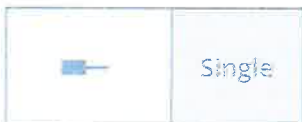
• 528 Watts	• 22' Mounting Height
• 58,977 Initial Lumens	• 0.9 Light Loss Factor (LLF)
Primary Playing Area (PPA) - 48' x 98'	
Average Maintained - 40.48 @ 3' above grade	
PPA Max : Min - 1.97	
PPA Coefficient of Variation (CV) - 0.19	
PPA Uniformity Gradient (UG) - 1.50	

8 Fixtures Per Court (60' x 120')



• 528 Watts	• 22' Mounting Height
• 58,977 Initial Lumens	• 0.9 Light Loss Factor (LLF)
Primary Playing Area (PPA) - 48' x 98'	
Average Maintained - 50.99 @ 3' above grade	
PPA Max : Min - 1.62	
PPA Coefficient of Variation (CV) - 0.13	
PPA Uniformity Gradient (UG) - 1.32	

Configurations

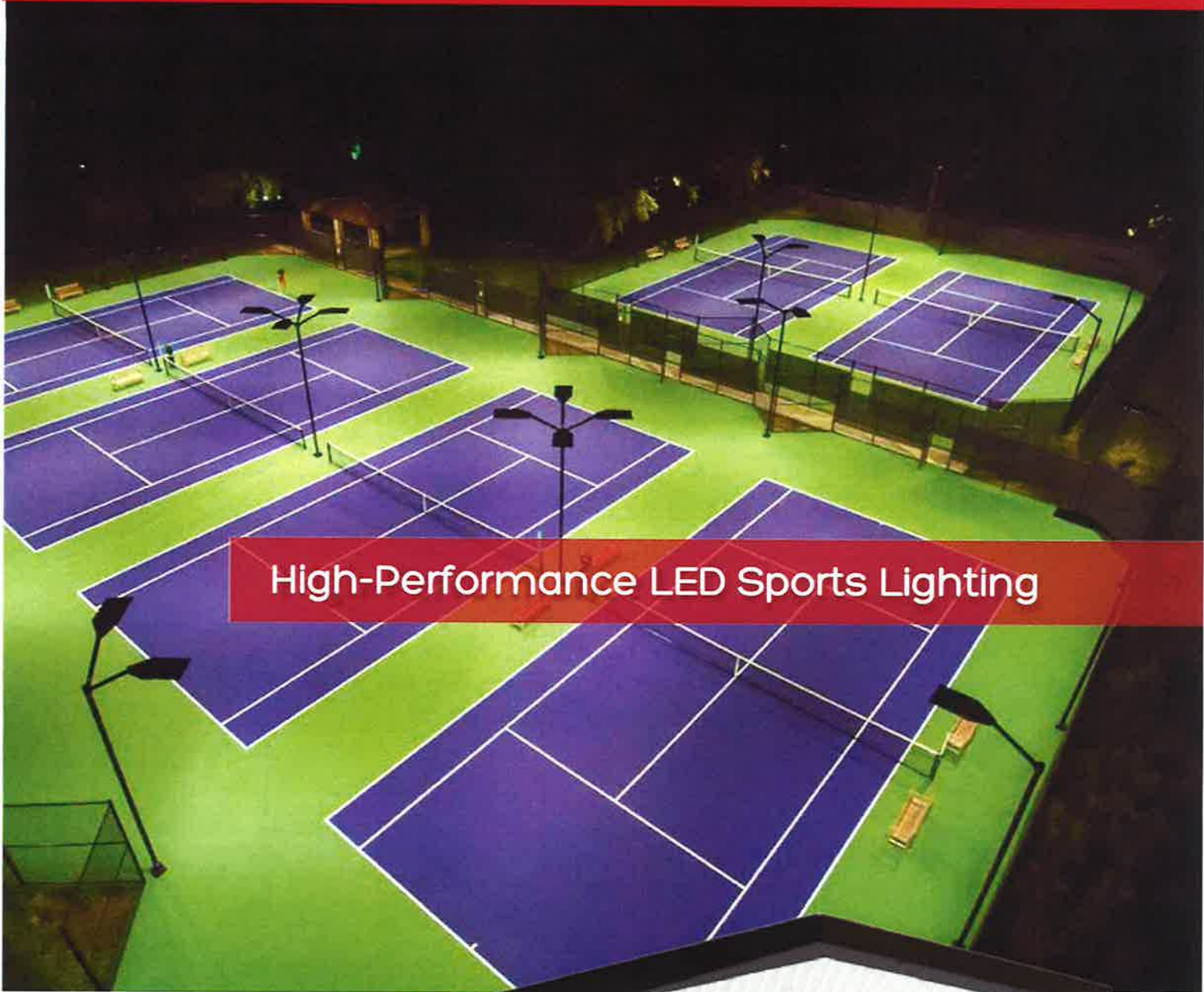


LED Create-A-Court Configurator

Use the design configurator to locate the appropriate LED lighting design(s) for your court application based upon the selection of design parameters. The lighting design(s) are offered in the PDF file format for easy web viewing, transfer and printability. To access the Create-A-Court configurator, please scan the QR Code or visit:

www.lsi-industries.com/products/create-a-court-configurator.aspx





High-Performance LED Sports Lighting



CourtBlade (XARL)
LED Sports Lighting

lsi-industries.com

LSI CourtBlade (XARL) LED Sports Lighting features

LSI's CourtBlade LED sports light is a game changer for court lighting applications. The low profile CourtBlade utilizes high performance LEDs and precise optics to produce superior levels of illumination and uniformity. Compared with typical HID court lighting systems, the energy load is reduced by 50%.

- High Performance, Full Cutoff LED
- Aerodynamic, Low-Profile Shape
- 50% Energy Reduction vs. 1000W Metal Halide
- 60,000 - 100,000 Hr Expected Life
- Direct Retrofit Mounting of LSI Courtsider® and Aerosystem® fixtures
- Matching Poles & Brackets Available
- Lightweight for Easy Installation (55 lbs.)
- Consistent lumen output over fixture life
- Instant On and Dimmable
- Optional wireless control available
- 5-Year Warranty
- Surge protection built-in
- Photometric Testing (3rd Party Tested)
- Glass lens over LED nodes vs Acrylic



Micro-Louver Optical System



The CourtBlade fixture's innovative Micro-Louver optical system provides a controlled forward throw distribution with sharp backside cutoff.

The 3D product illustration (above) shows an enlarged section of 15 of the 266 total mid-power LED chips of the optical system. The system also contains a secondary highly specular anodized aluminum reflector for each LED, and a clear flat glass lens. The reflector projects light forward and laterally to illuminate the court surface and the vertical ball travel area above the court.





The reflector design also reduces direct glare from the fixture at normal viewing angles. The photometric performance is verified by a third party, independent testing laboratory (ITL Boulder).



Ordering Information

Prefix	Distribution	Light Source	Drive Current	Color Temperature	Input Voltage	Finish	Options
XARL	FT Forward Throw	LED	HO High Output	CW Cool White (5000K) NW Neutral White (4000K)	UE Universal Voltage (120-277V) 347-480 Universal Voltage (347-480V)	BLK - Black GRN - Green BRZ - Bronze PLP - Platinum Plus WHT - White GPT - Graphite MSV - Metallic Silver	DIM 0-10V Dimming (from External Signal)

Typical Order Example: **XARL FT LED HO CW UE WHT**

Luminaire EPA Chart XARL (fixture & bracket)		
	Single	1.2
	D180°	2.4
	D70°	1.8
	Q90°	4.3

NOTE: House Side Shield adds to fixture EPA. Consult Factory.

Accessory Ordering Information	
Description	Order Number
XLCL-FT-HSS RM - External House Side Shield (Black only - rear mounted)	610098BLK ¹
FK120 - Single Fusing (120V)	FK120 ²
FK277 - Single Fusing (277V)	FK277 ²
DFK208,240 - Double Fusing (208V, 240V)	DFK208,240 ²
DFK480 Double Fusing (480V)	DFK480 ²
FK347 Single Fusing (347V)	FK347 ²

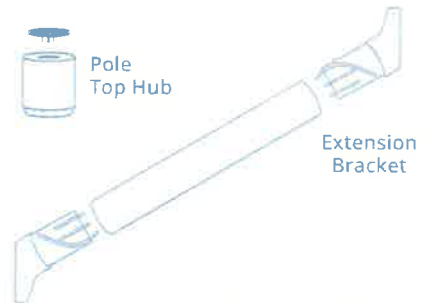
Accessories are field installed.

Electrical Requirements	
120V	4.6 amps
208V	2.6 amps
240V	2.3 amps
277V	2.0 amps
347V	1.6 amps
480V	1.2 amps

Bracket Ordering Information				
Bracket Designation	Bracket Type	Bracket Configuration	Length	Bracket Finish
BRKT - Extension Bracket ³	BO - Bolt On	S - Single	38"	BLK - Black BRZ - Bronze GPT - Graphite MSV - Metallic Silver PLP - Platinum Plus GRN - Green WHT - White
BRKT - Pole Top Hub ^{4,5}	4ESF - External Slipfitter	S - Single D180 - Double D70 - Double D90 - Double Q90 - Quad Q70 - Quad	*	

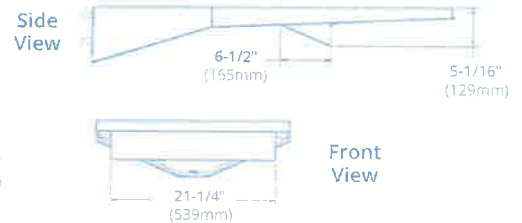
FOOTNOTES:

- 1 - House Side Shields add to fixture EPA. Consult factory.
- 2 - Fusing must be located in hand hole of pole.
- 3 - One extension bracket is required per fixture.
- 4 - Pole top hub will fit over 4" OD pole or 5" OD pole with 4" tenon.
- 5 - Cap is included with pole top hub

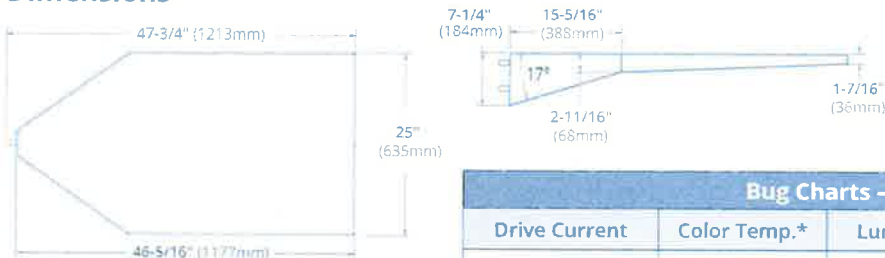


House Side Shields

Rear Mount (610098BLK)



Dimensions



Bug Charts - XARL-Type FT					
Drive Current	Color Temp.*	Lumens	Watts	LER	BUG Rating
HO High Output	CW	58,977	528	112	B5-U0-G4
	NW	56,960	528	108	B5-U0-G5

A proud member of **ASBA** (American Sports Builders Association) and **TIA** (Tennis Industry Association)



This product, or selected versions of this product, meet the standards listed below. Please consult factory for your specific requirements. Fixtures comply with ANSI C136.31-2010 American National Standard for Roadway Lighting Equipment - Luminaire Vibration 1.5G requirements.